

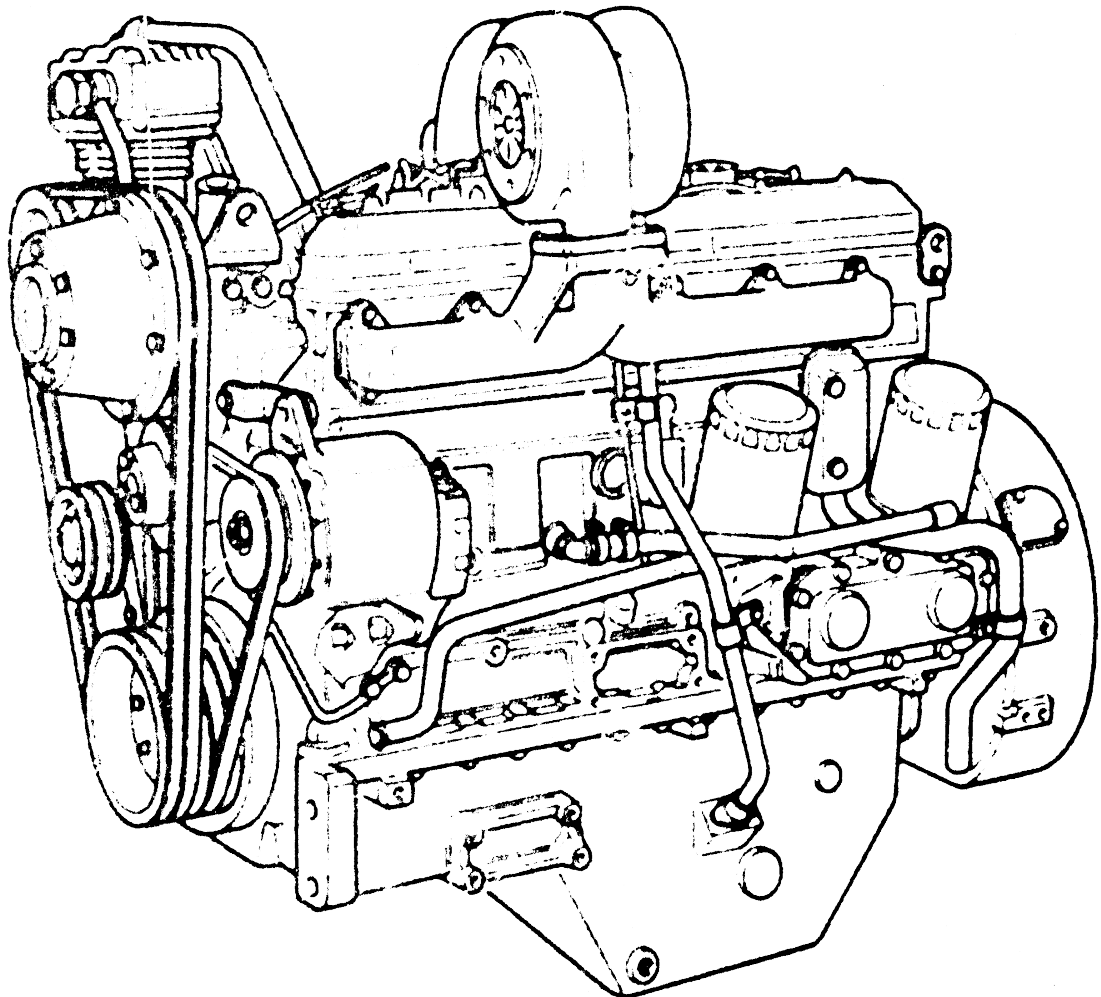
# ***MINNPAR***

---

*OEM and Quality Replacement Parts -- Since 1982*

## **MinnPar Replacement Parts for Iveco Engines**

**JUNE 2013**



5273 Program Avenue, Mounds View, Minnesota 55122 USA  
Telephone: (612) 379-0606 Fax: (612) 378-3741 Toll Free: (800) 889-3382  
[www.minnpar.com](http://www.minnpar.com) email: [info@minnpar.com](mailto:info@minnpar.com)



*OEM and Quality Replacement Parts -- Since 1982*

## INDEX

TERMS AND CONDITIONS OF SALE.....	PAGE 4
GENERAL INFORMATION .....	PAGE 5
PRICE BOOK DIFINTIONS .....	PAGE 6
IVECO DIESEL ENGINE MODELS .....	PAGE 7
VALVES AND CAMSHAFTS.....	PAGE 8
PISTON AND SLEEVES .....	PAGE 13
CONNECTING ROD AND CRANKSHAFTS .....	PAGE 17
GASKET AND SEALS .....	PAGE 23
COOLING SYSTEMS .....	PAGE 29
FILTER SECTION .....	PAGE 32

**VISIT OUR WEBSITE AT "[www.minnpar.com](http://www.minnpar.com)".  
FOR INFORMATION ON MINNPAR PRODUCT  
LINES, PARTS SPECIAL, NEW OFFERINGS AND  
GENERAL COMPANY INFORMATION.**

## MINNPAR 2012 TERMS AND CONDITIONS OF SALE- Dealers US Based

---

### Effectivity

This Parts Policy and Procedure Manual is by reference between MinnPar and the Dealer. MinnPar may make additions and/or changes to this policy upon thirty (30) days prior written notice, without incurring any liability. MinnPar has no Dealer contracts.

### Applicability

This Parts Policy and Procedure Manual applies to products offered by MinnPar.

### Administration of Policy

The administration and any interpretations of this Parts Policy and Procedure Manual will be the responsibility of MinnPar.

#### 1. Order Acceptance

Each order shall be subject to these terms and conditions which supersede any and all terms and conditions appearing on Purchaser's order form. Acceptance of an order by MinnPar is expressly conditional on agreement to these terms and conditions, which shall be deemed given unless Purchaser shall notify MinnPar to the contrary in writing within ten (10) days after order acceptance by MinnPar. No order accepted by MinnPar may be altered or modified by the Purchaser unless agreed to in writing, by MinnPar.

#### 2. Delivery and Transportation Costs

Delivery of goods to a carrier at MinnPar's factory or other shipping point shall constitute delivery to Purchaser. Unless otherwise specified, all goods are sold F.O.B. MinnPar's factory or warehouse shipping point. Method and route of shipment shall be at the discretion of MinnPar unless purchaser specifies otherwise. Any additional expense of the method or route of shipment specified by Purchaser shall be borne entirely by Purchaser.

#### 3. Partial Shipments and Delays

MinnPar reserves the right to make partial shipments. Partial shipments shall be separately invoiced and paid for when due per invoice without regard to subsequent deliveries. Delay in delivery of any partial shipment shall not relieve Purchaser of its obligations to accept remaining deliveries. MinnPar shall not be liable for any damage including special or consequential damages as a result of any delay.

#### 4. Payment Terms

With credit approval, the net amount of an invoice shall be due thirty (30) days after the invoice date unless otherwise stated in the invoice. Thereafter, any unpaid balance is subject to a service charge. MinnPar reserves the right to request credit information and establish credit limits. MinnPar may require full payment in advance of shipment of the order. MinnPar accepts ALL major credit cards for payment.

#### 5. Warranty

MinnPar warrants that its new parts will conform to applicable specifications and be free of defects in material and workmanship under normal use and service. This warranty shall extend for 180 days from MinnPar invoice date, Rotating Electric Warranty is 18 months. MinnPar will replace free of charge F.O.B. MinnPar plant any parts to be defective in materials or workmanship provided the part or parts were properly installed, serviced, and used in normal operation. MinnPar may request the defective part be returned to our warehouse. UNDER NO CIRCUMSTANCES WILL MINNPAR RECOGNIZE CLAIMS FOR LABOR CHARGES OR CONSEQUENTIAL DAMAGES, OUR LIABILITY BEING LIMITED STRICTLY TO THE REPLACEMENT OF SUCH PARTS AS WE FIND DEFECTIVE.

#### 6. Remanufactured Parts Policy

Remanufactured parts will be priced for the item ordered plus core charge if applicable. These charges will be separated on order and invoice.

### 7. Service Parts Order Classification

MinnPar will classify each order in one of the following categories:

1. Emergency/Machine Down (ship same day), 5% Handling Fee
2. Repair (ship within 2-3 days), normal Dealer Net
3. Stock (ship within 5 working days)
  - Orders \$0-\$400, 2% discount off Dealer Net, freight prepaid & charged
  - Order \$400-7500, 5% discount off Dealer Net, plus free freight.
  - Orders \$7500 and up, 7% discount off Dealer Net, plus free freight.

MinnPar has the right to restrict certain large heavy items from the Stock Order program. Orders must be clearly marked 'Stock Order'. An order not marked as **stock** will be processed as a repair order.

#### Minimum Order

A \$4.00 handling charge will apply to all orders less than \$50.00 in value.

#### Emergency Charge

A 5% handling charge will be applied to all Emergency orders not to exceed the maximum of \$75.00 per any line item. These charges will appear on the invoice as handling charges.

#### Parts Pricing

All prices are F.O.B. point of origin and subject to change without notice. In addition to prices by part number, the Price List will include the descriptions, obsolescence and return codes.

All orders must be in writing and can be placed by MinnPar On-Line Parts Ordering System ([www.minnpar.com](http://www.minnpar.com)) or faxed to 612 378-3741. Emergency orders receive maximum priority handling. All domestic emergency orders that are routed air or customer pick-up and are received before 4:00 PM Central Time will ship the same day provided the parts are in stock. Emergency orders by other methods of shipment will be given prompt handling, but MinnPar cannot assure same day shipment due to the pick-up schedules of carriers.

#### 8. Service Parts Return Policy

Purchaser may return any returnable parts subject to the following terms and conditions. A non-returnable part is identified in the current parts price list.

A. Request for return authorization must be made within thirty (30) days of invoice date and the parts must be returned within thirty (30) days of the authorization for parts shipped/ordered in error.

B. Your purchase order number and the MinnPar order number must be submitted with the request. All goods returned must be accompanied by sales invoice supporting part purchase from MinnPar.

C. The authorized return amount will be credited to the Purchaser's account at invoice price less 20% handling and returning charges.

D. All parts authorized for return must have an RMA (Return Material Authorization) number and a copy of the RMA with the return parts.

E. Freight must be prepaid by the Purchaser.

F. All parts must be tagged with OEM/MinnPar part number.

G. Parts must be in a new and saleable condition as determined by MinnPar inspection.

H. Parts must have been originally purchased as an emergency or repair service parts order from MinnPar. Stock order returns will be allowed only on the annual return program.

I. Cores returned must have prior Return Material Authorization (RMA). Cores must be complete and assembled with core tag attached. Cores must be returned within 45 days of shipment of remanufactured part.

J. Parts returned without a return material authorization (RMA) will not be accepted and will be returned to the Purchaser, freight collect.

K. If Purchaser places an order and that part was placed in error by Purchaser, or a shipping error, the Purchaser can return the part subject to the above terms (items A-I).

L. Once per year, a Purchaser may return for credit up to 10% of the stock orders placed the previous calendar year subject to the above terms (items B-I). A Purchaser will be notified on an annual basis the total value of stock orders placed and will be given a specific return date.

M. Parts to be returned to MinnPar must be in the original package and have a minimum line value of \$8.00. Broken packs, kits, or components will not be accepted for return credit.

9. Claims for loss or damage to goods in transit are to be made promptly to the carrier, not to MinnPar. Claims for shortages or other errors, exclusive of transit shortages or damages, must be made in writing to MinnPar within ten (10) days after delivery; failure to give such notice shall constitute acceptance and waiver of all claims by Purchaser.

10. Any sales or use tax imposed by any government agency on any transaction between MinnPar and Purchaser shall be paid by Purchaser. In lieu of payment, Purchaser shall provide MinnPar at the time order is submitted with an acceptable tax exemption certification

#### Parts Technical Support Analyst

Technical Support Analysts assist Dealers in the identification or validation of the parts to be ordered. All inquiries pertaining to technical assistance should be directed to 612 379-0606 or email: [www.sales@minnpar.com](mailto:www.sales@minnpar.com).

#### Service Parts Work Hours

The Parts Department's standard working hours are 7:00 AM to 5:00 PM Central Time. Monday through Friday with the exception of observed holidays. The Parts Support hot line telephone number is 612 379-0606.

#### Backorders

Dealers are responsible for reviewing backorders with their customers to determine if the part is still required. Requests for cancellation of part(s) should be initiated through MinnPar Customer Service Expediting Department.

#### Contact Information

Web site: [www.minnpar.com](http://www.minnpar.com)

On line ordering: [www.minnpar.com](http://www.minnpar.com)

Phone Number: 612 379-0606

Fax Number: 612 378-3741



*OEM and Quality Replacement Parts -- Since 1982*

## Iveco Diesel Engines Models

---

### Group "A"

8041.I.02  
8045.04  
8065.04

### Group "E"

8365.25

### Group "B"

8041.I.05  
8045.05  
8061.I.05  
8065.05

### Group "F"

CO3-130

### Group "C"

8045.24  
8065.24

### Group "G"

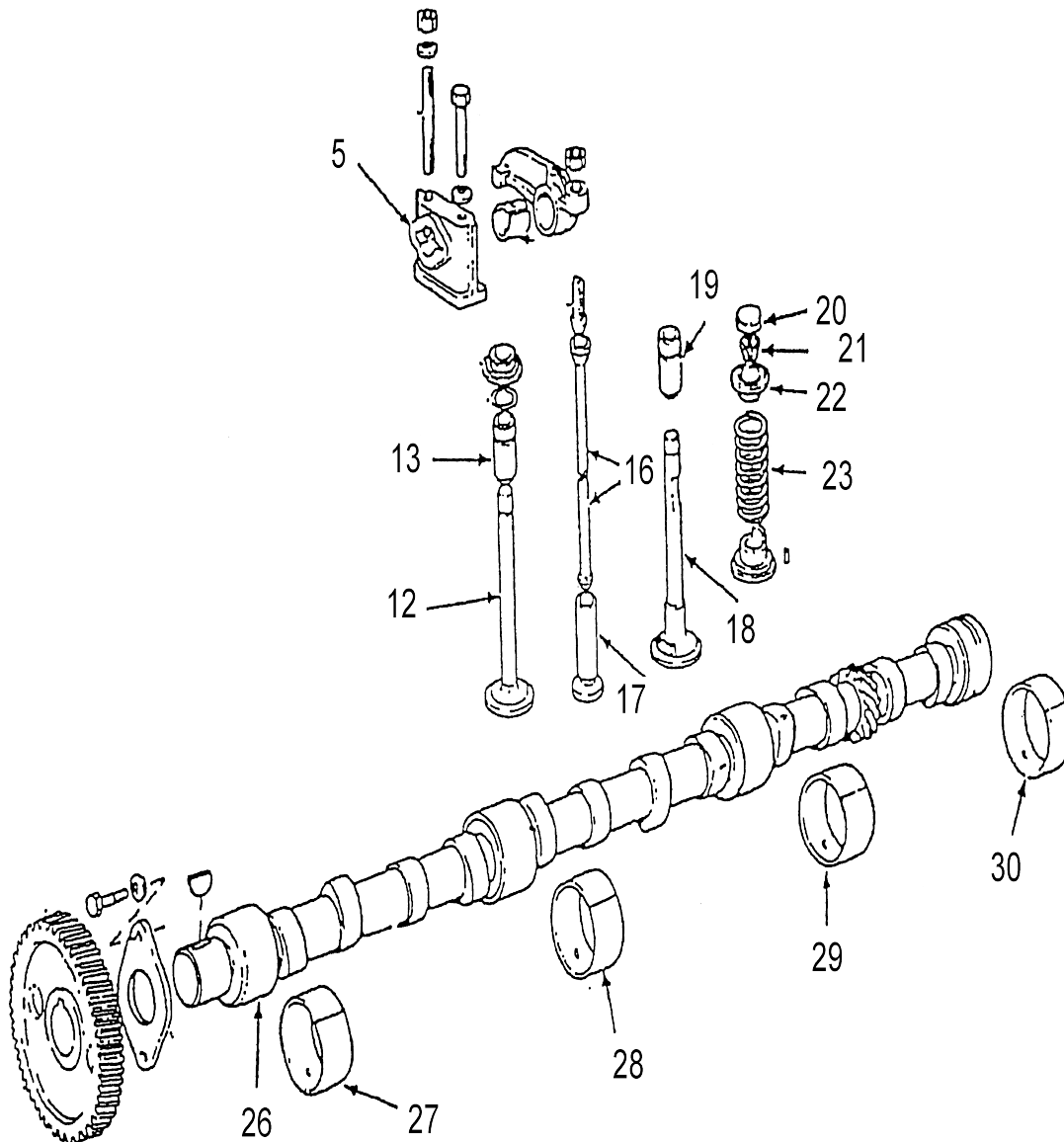
8215.02  
8215.22

### Group "D"

8045.25  
8065.25

## VALVES / CAMSHAFT

---





OEM and Quality Replacement Parts -- Since 1982

**GROUP "A" MODELS 8041.I.02, 8045.04, 8065.04**

**VALVES & CAMSHAFT**

ITEM #	PART NUMBER	DESCRIPTION	4 CYL	6 CYL
5	4601295	Support	4	6
12	4802200	Intake Valve	4	6
13	4802126	Intake Exhaust Guide	8	12
16	4637005	Push Rod	8	12
17	98471524	Tappet	8	12
17a	4693033	Tappet (prior Jan 1976)	8	12
18	4673608	Exhaust Valve	4	6
19	-	See Item # 13	-	-
20	4838680	Cap	8	12
21	14196670	Valve Lock	16	24
22	4578175	Cup, Upper	8	12
23	4689554	Valve Spring	8	12
26	4603154	Camshaft	1	-
26	4603190	Camshaft	-	1
27	4718618	Internal/Rear Cam Bearing	1	1
28	4718619	Internal/Rear Cam Bearing	1	1
29	4718620	Front Cam Bearing	1	1
30	4718621	Rear Cam Bearing	-	1

**GROUP "B" MODELS 8041.I.05, 8045.05, 8061.I.05, 8065.05**

**VALVES & CAMSHAFT**

5	4601295	Support	4	6
12	1908408	Intake Valve	4	6
13	4802126	Intake Exhaust Guide	8	12
16	98471529	Push Rod	8	12
17	98471524	Tappet	8	12
17a	4693033	Tappet (prior Jan 1976)	8	12
18	1908410	Exhaust Valve	4	6
19	-	See Item # 13	-	-
20	4838680	Cap	8	12
21	14196670	Valve Lock	16	24
22	4780558	Cup, Upper	8	12
23	4780108	Valve Spring	8	12
26	98425868	Camshaft	1	-
26	4824221	Camshaft	-	1
27	4718618	Internal/Rear Cam Bearing	1	1
28	4718619	Internal/Rear Cam Bearing	1	1
29	4718620	Front Cam Bearing	1	1
30	4718621	Rear Cam Bearing	-	1

5273 Program Avenue, Mounds View, Minnesota 55122 USA Telephone: (612)  
379-0606 Fax: (612) 378-3741 Toll Free: (800) 889-3382

**www.minnpar.com**

**email: info@minnpar.com**



OEM and Quality Replacement Parts -- Since 1982

**GROUP "C" MODELS 8045.24, 8065.24**

**VALVES & CAMSHAFT**

ITEM #	PART NUMBER	DESCRIPTION	4 CYL	6 CYL
5	4601295	Support	4	6
12	4802204	Intake Valve	4	6
13	4802126	Intake Exhaust Guide	8	12
16	4637005	Push Rod	8	12
17	98471524	Tappet	8	12
17a	4693033	Tappet (prior Jan 1976)	8	12
18	4658055	Exhaust Valve	4	6
19	-	See Item # 13	-	-
20	4838680	Cap	8	12
21	14196670	Valve Lock	16	24
22	4578175	Cup, Upper	8	12
23	4578950	Outer Valve Spring	8	12
23a	4578951	Inner Valve Spring	8	12
26	4603154	Camshaft	1	-
26	4603190	Camshaft	-	1
27	4718618	Internal/Rear Cam Bearing	1	1
28	4718619	Internal/Rear Cam Bearing	1	1
29	4718620	Front Cam Bearing	1	1
30	4718621	Rear Cam Bearing	-	1

**GROUP "D" MODELS 8045.25, 8065.25**

**VALVES & CAMSHAFT**

5	4601295	Support	4	6
12	1908408	Intake Valve	4	6
13	4802126	Intake Exhaust Guide	8	12
16	98471529	Push Rod	8	12
17	98471524	Tappet	8	12
17a	4693033	Tappet (prior Jan 1976)	8	12
18	1908409	Exhaust Valve	4	6
19	-	See Item # 13	-	-
20	4838680	Cap	8	12
21	14196670	Valve Lock	16	24
22	4578175	Cup, Upper	8	12
23	4578950	Outer Valve Spring	8	12
23a	4578951	Inner Valve Spring	8	12
26	98425868	Camshaft	1	-
26	4824221	Camshaft	-	1
27	4718618	Internal/Rear Cam Bearing	1	1
28	4718619	Internal/Rear Cam Bearing	1	1
29	4718620	Front Cam Bearing	1	1
30		Rear Cam Bearing	-	1



**GROUP "E" MODELS 8365.25**  
**VALVES & CAMSHAFT**

ITEM #	PART NUMBER	DESCRIPTION	4 CYL	6 CYL
5	98418727	Support		12
12	4821709	Intake Valve		6
13	4758794	Intake Exhaust Guide		6
16	8828869	Push Rod		12
17	4753580	Tappet		12
18	8830045	Exhaust Valve		6
19	4758798	Exhaust Guide		6
21	14196670	Valve Lock		24
23	4798427	Valve Spring		12
26	Call MinnPar	Camshaft MUST VERIFY APPLICATION		-
27	8829580	Front Cam Bearing		1
28	8829581	Internal Cam Bearing		5
30	8829582	Rear Cam Bearing		1

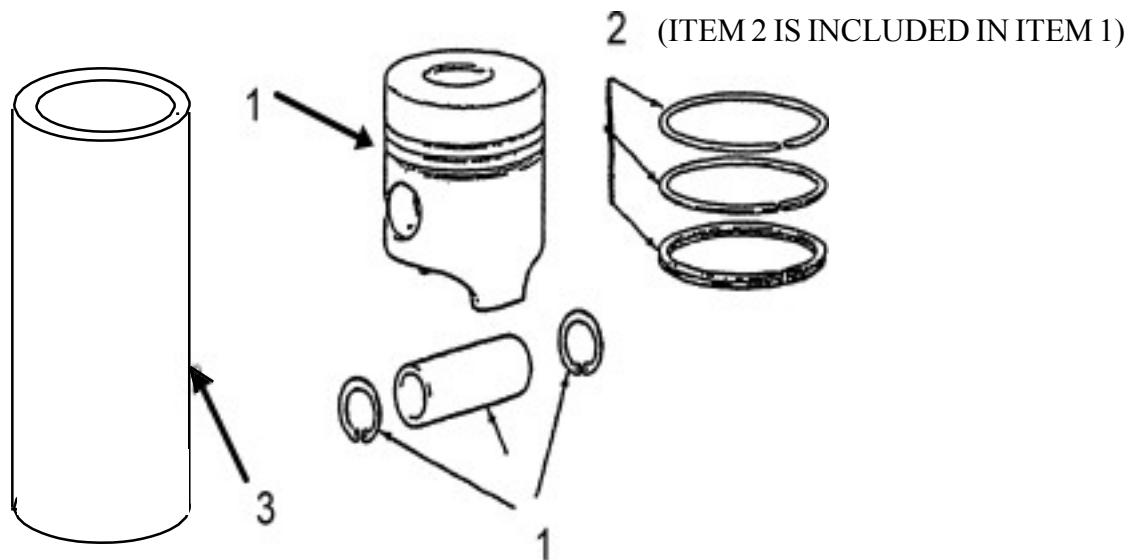
**GROUP "F" MODELS C03-130**

**VALVES & CAMSHAFT**

12	4821709	Intake Valve	4	
13	4758794	Intake Exhaust Guide	4	
16	8828869	Push Rod	8	
17	4753580	Tappet	8	
18	8830045	Exhaust Valve	4	
19	4758798	Exhaust Guide	4	
21	14196670	Valve Lock	16	
23	4798427	Valve Spring	8	

## **PISTON & SLEEVE**

---





OEM and Quality Replacement Parts -- Since 1982

**GROUP "A" MODELS 8041.I.02,8045.04,8065.04**  
**PISTON & SLEEVE**

ITEM #	PART NUMBER	DESCRIPTION	4 CYL	6 CYL
1	1908748	Piston Set	4	6
2	1909234	Ring Set	4	6
3	4679201	Liner	4	6

**GROUP "B" MODELS 8041.I.05, 8045.05, 8061.I.05, 8065.05**  
**PISTON & SLEEVE**

1	1930186	Piston Set	4	6
2	1930191	Ring Set	4	6
3	4770623	Liner	4	6

**GROUP "C" MODELS 8045.24, 8065.24**  
**PISTON & SLEEVE**

1	1930000	Piston Set	4	6
2	1930005	Ring Set	4	6
3	4679201	Liner	4	6

**GROUP "D" MODELS 8045.25, 8065.25**  
**PISTON & SLEEVE**

1	1930206	Piston Set	4	6
2	1930209	Ring Set	4	6
3	4770623	Liner	4	6

**GROUP "E" MODELS 8365.25**  
**PISTON & SLEEVE**

1	1930232	Piston Set, FLAT TYPE		6
1A	1930742	Piston Set, STEPPED TYPE		6
		<i>Refer to s/n &amp; camshaft to determine correct piston</i>		
2	1930753	Ring Set		6
3	4850230	Liner**		6

**GROUP "F" MODELS C03-130**  
**PISTON & SLEEVE**

1	1901209	Piston Set	4	
2	1901481	Ring Set	4	
3	4850230	Liner**	4	
*SEE LINER SHIM ATTACHMENT.				

*OEM and Quality Replacement Parts -- Since 1982*

## Liner Shims for CO3 & 8365 Iveco

Part Number	Size - mm	Size - Inches	Color Code
4750807	3.09-3.11	.1216-.1224	Brown
4750808	3.11-3.13	.1224-.1232	Brown-Orange
4750809	3.13-3.15	.1232-.1240	Orange
4750810	3.15-3.17	.1240-.1248	Yellow
4750811	3.17-3.19	.1248-.1255	Yellow-Red
4750812	3.19-3.21	.1255-.1263	Red
4750813	3.21-3.23	.1263-.1271	Green
4750814	3.23-3.25	.1271-.1279	Green-White
4750815	3.25-3.27	.1279-.1287	White
4750816	3.27-3.29	.1287-.1295	Blue
4750817	3.29-3.31	.1295-.1303	Blue-Black
4750818	3.31-3.33	.1303-.1311	Black
4750819	3.33-3.35	.1311-.1318	Black-Yellow
4750820	3.35-3.37	.1318-.1326	Yellow-Green
4750821	3.37-3.39	.1326-.1334	Green-Red
4750822	3.39-3.41	.1334-.1342	Red-Black
4764705	3.41-3.43	.1342-.1350	White-Black – No longer available
4764706	3.43-3.45	.1350-.1358	White-Red
4764707	3.45-3.47	.1358-.1366	White-Brown
4764708	3.47-3.49	.1366-.1374	White-Blue

5273 Program Avenue, Mounds View, Minnesota 55122 USA

Telephone: (612) 379-0606 Fax: (612) 378-3741 Toll Free: (800) 889-3382

www.minnpar.com

email: info@minnpar.com



OEM and Quality Replacement Parts -- Since 1982

## GROUP "G" MODELS 8215.02, 8215.22

### CONNECTING ROD & CRANKSHAFT GROUP

ITEM #	PART NUMBER	DESCRIPTION	4 CYL	6 CYL
1	1901398	Piston Set <i>"A" type non-turbo</i>	-	6
1 A	1901399	Piston Set <i>"B" type non-turbo</i>	-	6
1 B	1902406	Piston Set <i>Non-turbo</i>	-	6
		<i>Turbo type match all six</i>		
2	1901452	Ring Set	-	6
2 A	1902405	Ring Set <i>Turbo</i>	-	6
3	4622074	Liner	-	6

5273 Program Avenue, Mounds View, Minnesota 55122 USA

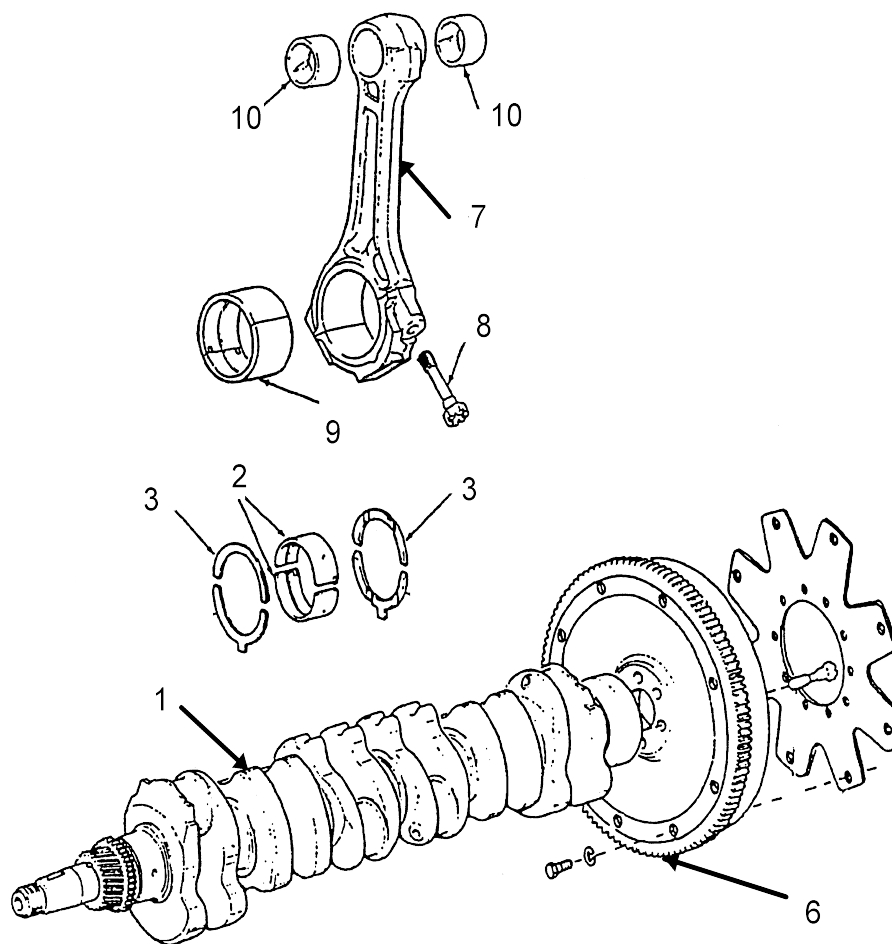
Telephone: (612) 379-0606 Fax: (612) 378-3741 Toll Free: (800) 889-3382

www.minnpar.com

email: info@minnpar.com

## CONNECTING ROD & CRANKSHAFT GROUP

---





OEM and Quality Replacement Parts -- Since 1982

**GROUP "A" MODELS 8041.I.02,8045.04,8065.04**  
**CONNECTING ROD & CRANKSHAFT GROUP**

ITEM #	PART NUMBER	DESCRIPTION	4 CYL	6 CYL
1	4785103	Crankshaft- No longer available	1	-
1A	4785100	Crankshaft- No longer available	-	1
2	1901803	Main Bearing Std.	5	7
2A	1901804	Main Bearing .010	5	7
2B	1901805	Main Bearing .020	5	7
3	1901377	Thrust Washer KIT	1	1
6	4704106*	Ring Gear	1	1
		<i>*used with some marrelli starters</i>		
7	4796181	Connecting Rod	4	6
8	4762000	Bolt	8	12
9	1901609	Rod Bearing Std.	4	6
9A	1901610	Rod Bearing -.010	4	6
9B	1901611	Rod Bearing -.020	4	6
9C	1901612	Rod Bearing -.030	4	6
9D	1901613	Rod Bearing -.040	4	6
10	4766404	Wrist Pin Bushing	4	6

**GROUP "B" MODELS 8041.I.05, 8045.05, 8061.I.05, 8065.05**  
**CONNECTING ROD & CRANKSHAFT GROUP**

1	4785110	Crankshaft	1	-
1A	4785107	Crankshaft	-	1
2	1930176	Main Bearing Std.	5	7
2A	1930177	Main Bearing .010	5	7
2B	1930178	Main Bearing .020	5	7
2C	1930179	Main Bearing .030	5	7
2D	1930180	Main Bearing .040 - No longer available	5	7
3	1901385	Thrust Washer KIT	1	1
6	4704106*	Ring Gear	1	1
		<i>*used with some marrelli starters</i>		
7	98461751	Connecting Rod Bolt	4	6
8	4780627	Rod Bearing Std.	8	12
9	1930181	Rod Bearing -.010	4	6
9A	1930182	Rod Bearing -.020	4	6
9B	1930183	Rod Bearing -.030	4	6
9C	1930184	Rod Bearing -.040 - No longer available	4	6
9D	1930185	Wrist Pin Bushing	4	6
10	4766404		4	6

## GROUP "C" MODELS 8045.24,8065.24 CONNECTING ROD & CRANKSHAFT GROUP

ITEM #	PART NUMBER	DESCRIPTION	4 CYL	6 CYL
1	4785104	Crankshaft	1	-
1A	4785100	Crankshaft	-	1
2	1901803	Main Bearing Std.	5	7
2A	1901804	Main Bearing .010	5	7
2B	1901805	Main Bearing .020	5	7
3	1901377	Thrust Washer KIT	1	1
6	4704106*	Ring Gear <i>*used with some marrelli starters</i>	1	1
7	4796181	Connecting Rod	4	6
8	4762000	Bolt	8	12
9	1901609	Rod Bearing Std.	4	6
9A	1901610	Rod Bearing -.010	4	6
9B	1901611	Rod Bearing -.020	4	6
9C	1901612	Rod Bearing -.030	4	6
9D	1901613	Rod Bearing -.040	4	6
10	4766404	Wrist Pin Bushing	4	6

## GROUP "D" MODELS 8045.25, 8065.25 CONNECTING ROD & CRANKSHAFT GROUP

1	4785110	Crankshaft	1	-
1A	4785107	Crankshaft	-	1
2	1930176	Main Bearing Std.	5	7
2A	1930177	Main Bearing .010	5	7
2B	1930178	Main Bearing .020	5	7
2C	1930179	Main Bearing .030	5	7
2D	1930180	Main Bearing .040	5	7
3	1901385	Thrust Washer KIT	1	1
6	4704106*	Ring Gear <i>*used with some marrelli starters</i>	1	1
7	98461753	Connecting Rod Bolt	4	6
8	4780627	Rod Bearing Std.	8	12
9	1930201	Rod Bearing -.010	4	6
9A	1930202	Rod Bearing -.020	4	6
9B	1930203	Rod Bearing -.030 - No longer available	4	6
9C	1930204	Rod Bearing -.040 -No longer available	4	6
9D	1930205	Wrist Pin Bushing	4	6
10	4783226		8	12

--	--	--	--	--





OEM and Quality Replacement Parts -- Since 1982

**GROUP "E" MODELS 8365.25**  
**CONNECTING ROD & CRANKSHAFT GROUP**

ITEM #	PART NUMBER	DESCRIPTION	4 CYL	6 CYL
1	4832171	Crankshaft		1
2	1901832	Main Bearing Std.		1
2A	1901833	Main Bearing .010		1
2B	1901834	Main Bearing .020		1
2C	1901835	Main Bearing .030		1
2D	1901836	Main Bearing .040 - No longer available		1
3	1901385	Thrust Washer KIT		1
6	4734354*	Ring Gear <i>*Some construction equipment applications</i>		1
7	4821454	Connecting Rod <i>Used with late style rod bearings</i>		6
8	4722162	Bolt		12
9	1901619	Rod Bearing - Std.		6
9A	1901620	Rod Bearing -.010		6
9B	1901621	Rod Bearing -.020		6
9C	1901622	Rod Bearing -.030		6
9D	1901623	Rod Bearing -.040 <i>Above used with early style connecting rod</i>		6
9	1907772	Rod Bearing - Std.		6
9A	1907773	Rod Bearing -.010		6
9B	1907774	Rod Bearing -.020		6
9C	1901996	Rod Bearing -.030		6
9D	1901997	Rod Bearing -.040 <i>Above used with late style connecting rod</i>		6
10	4803660	Wrist Pin Bushing		6

OEM and Quality Replacement Parts -- Since 1982

## GROUP "F" MODELS CO3-130

### CONNECTING ROD & CRANKSHAFT GROUP

ITEM #	PART NUMBER	DESCRIPTION	4 CYL	6 CYL
2	1901832	Main Bearing Std.	1	
2A	1901833	Main Bearing .010	1	
2B	1901834	Main Bearing .020	1	
2C	1901835	Main Bearing .030	1	
2D	1901836	Main Bearing .040 - No longer available <i>These bearings kits for 6 cylinder engines Discard unused bearings</i>	1	
3	1901385	Thrust Washer Kit	1	
6	8819789	Ring Gear	1	
	OR	<i>Review for proper application</i>	1	
6A	4764904	Ring Gear 122 Teeth	8	
8	4722162	Bolt	4	
9	1901619	Rod Bearing - Std	4	
9A	1901620	Rod Bearing -.010	4	
9B	1901621	Rod Bearing -.020	4	
9C	1901622	Rod Bearing -.030	4	
9D	1901623	Rod Bearing -.040	4	
10	8828445	Wrist Pin Bushing		

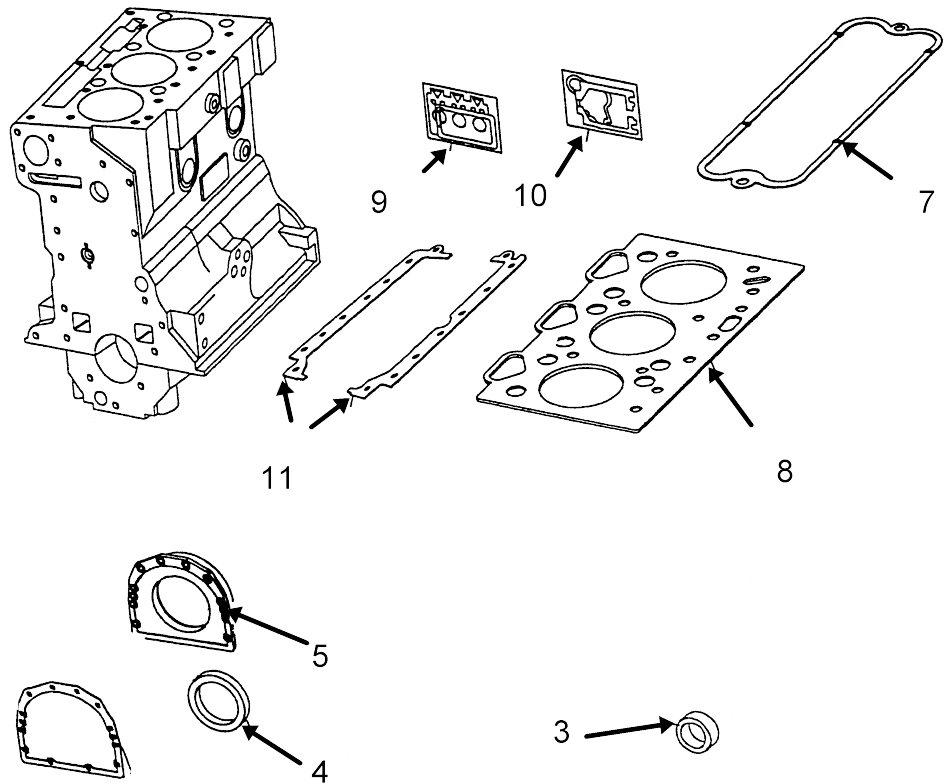
## GROUP "G" MODELS 8215.02, 8215.22

### CONNECTING ROD & CRANKSHAFT GROUP

1	98475013	Crankshaft		1
2	1901367	Main Bearing Std.		1
2A	1901368	Main Bearing .010		1
2B	1901369	Main Bearing .020		1
2C	1901370	Main Bearing .030 - No longer available		1
2D	1901371	Main Bearing .040 - No longer available		1
3	1901203	Thrust Washer KIT		1
7	4762030	Connecting Rod <i>Used with late style rod bearings</i>		6
9	1901656	Rod Bearing - Std.		6
9A	1901657	Rod Bearing -.010		6
9B	1901658	Rod Bearing -.020		6
9C	1901659	Rod Bearing -.030		6
9D	1901660	Rod Bearing -.040 - No longer available <i>Above used up to engine s/n 8136</i>		6
9	1902080	Rod Bearing - Std.		6
9A	1902081	Rod Bearing -.010		6
9B	1902082	Rod Bearing -.020		6
9C	1902083	Rod Bearing -.030		6
9D	1902084	Rod Bearing -.040 - No longer available <i>Above used from engine s/n 8137</i>		6
10	4762031	Wrist Pin Bushing		6

## GASKET & SEALS

---





OEM and Quality Replacement Parts -- Since 1982

**GROUP "A" MODELS 8041.I.02, 8045.04, 8065.04**

**GASKET & SEALS**

ITEM #	PART NUMBER	DESCRIPTION	4 CYL	6 CYL
3	98461684	Front Crank Seal	1	1
4	40002811	Rear Main Seal	1	1
		<i>Single Lip 110X135X13</i>		
4A	9846186	Rear Main Seal- No longer available	1	1
		<i>Single Lip 114X135X13</i>		
4B	75127830	Rear Main Seal w/Sleeve	1	1
		<i>Contains:</i>		
	40003500	Seal Double Lip	1	1
	4751110	Sleeve		
		<i>116X135X18</i>	1	1
5	4849994	Gasket	1	1
7	4845136	Rocker Valve Cover Gasket	1	-
7A	4845138	Rocker Valve Cover Gasket	-	1
8	98456215	Head Gasket	1	-
8A	98456219	Head Gasket	-	1
9	75127417	Upper Gasket Kit	1	-
9A	75127422	Upper Gasket Kit	-	1
10	75127419	Lower Gasket Kit	1	-
10A	75127424	Lower Gasket Kit	-	1
11	1940004	Pan Gasket	1	-
11A	1902219	Pan Gasket	-	1

## GROUP "B" MODELS 8041.I.05, 8045.05, 8061.I.05, 8065.05

### GASKET & SEALS

ITEM #	PART NUMBER	DESCRIPTION	4 CYL	6 CYL
3	98461684	Front Crank Seal	1	1
4	40002811	Rear Main Seal	1	1
		<i>Single Lip 110X135X13</i>		
4A	9846186	Rear Main Seal- No longer available	1	1
		<i>Single Lip 114X135X13</i>		
4B	75127830	Rear Main Seal w/Sleeve	1	1
		<i>Contains:</i>		
	40003500	Seal Double Lip	1	1
		<i>116X135X18</i>		
	4751110	Sleeve	1	1
5	4849994	Gasket	1	1
9	75127418	Upper Gasket Kit	1	-
9A	75127423	Upper Gasket Kit	-	1
10	75127420	Lower Gasket Kit	1	-
10A	75127425	Lower Gasket Kit	-	1

## GROUP "C" MODELS 8045.24, 8065.24

### GASKET & SEALS

3	98461684	Front Crank Seal	1	1
4	40002811	Rear Main Seal	1	1
		<i>Single Lip 110X135X13</i>		
4A	9846186	Rear Main Seal- No longer available	1	1
		<i>Single Lip 114X135X13</i>		
4B	75127830	Rear Main Seal w/Sleeve	1	1
		<i>Contains:</i>		
	40003500	Seal Double Lip	1	1
		<i>116X135X18</i>		
	4751110	Sleeve	1	1
5	4849994	Gasket	1	1
7	4845136	Rocker Valve Cover Gasket	1	-
7A	4845138	Rocker Valve Cover Gasket	-	1
8	98456215	Head Gasket	1	-
8A	98456219	Head Gasket	-	1
9	75127417	Upper Gasket Kit	1	-
9A	75127422	Upper Gasket Kit	-	1
10	75127419	Lower Gasket Kit	1	-
10A	75127424	Lower Gasket Kit	-	1
11	1940004	Pan Gasket	1	-
11A	1902219	Pan Gasket	-	1

5273 Program Avenue, Mounds View, Minnesota 55122 USA

Telephone: (612) 379-0606 Fax: (612) 378-3741 Toll Free: (800) 889-3382

www.minnpar.com

email: info@minnpar.com



OEM and Quality Replacement Parts -- Since 1982

**GROUP "D" MODELS 8045.25, 8065.25**

**GASKET & SEALS**

ITEM #	PART NUMBER	DESCRIPTION	4 CYL	6 CYL
3	98461684	Front Crank Seal	1	1
4	40002811	Rear Main Seal	1	1
		<i>Single Lip 110X135X13</i>		
4A	98461686	Rear Main Seal- No longer available	1	1
		<i>Single Lip 114X135X13</i>		
4B	75127830	Rear Main Seal w/Sleeve	1	1
		<i>Contains:</i>		
	40003500	Seal Double Lip	1	1
	4751110	Sleeve	1	1
		<i>116X135X18</i>		
5	4849994	Gasket	1	1
7	4845136	Rocker Valve Cover Gasket	1	-
7A	4845138	Rocker Valve Cover Gasket	-	1
8	98456215	Head Gasket	1	-
9	75127418	Upper Gasket Kit	1	-
9A	75127423	Upper Gasket Kit	-	1
10	75127420	Lower Gasket Kit	1	-
10A	75127425	Lower Gasket Kit	-	1
11	1940004	Pan Gasket	1	-
11A	1902219	Pan Gasket	-	1

## GROUP "E" MODELS 8365.25

### GASKET & SEALS

ITEM #	PART NUMBER	DESCRIPTION	4 CYL	6 CYL
3	40101393	Front Crank Seal	1	1
4	98499174	Rear Main Seal	-	1
	4760463	OS Seal Kit <i>125X150</i> <i>131X150/158X28</i>	-	1
	40101384	Contains: Seal <i>131X150/158X28</i>	-	1
	4801846	Sleeve <i>125X131X28</i>	-	1
5	4851387	Gasket	-	1
7	8829321	Rocker Valve Cover Gasket	-	1
8	4845364	Head Gasket	-	1
9	75127432	Upper Gasket Kit	-	1
10	75127433	Lower Gasket Kit	-	1
11	98424115	Pan Gasket	-	1

## GROUP "F" MODELS CO3-130

### GASKET & SEALS

3	40101393	Front Crank Seal	1	1
4	8827804	Rear Main Seal- No longer available	-	1
4 A	4760463	OS Seal Kit  <i>Contains:</i>	-	1
	40101384	Seal <i>131X150/158X28</i>	-	1
	4801846	Sleeve <i>125X131X28</i>	-	1
7	8829095	Rocker Valve Cover Gasket	1	-
8	98499587	Head Gasket	1	-

5273 Program Avenue, Mounds View, Minnesota 55122 USA

Telephone: (612) 379-0606 Fax: (612) 378-3741 Toll Free: (800) 889-3382

www.minnpar.com

email: info@minnpar.com



*OEM and Quality Replacement Parts -- Since 1982*

**GROUP "G" MODELS 8215.02, 8215.22**

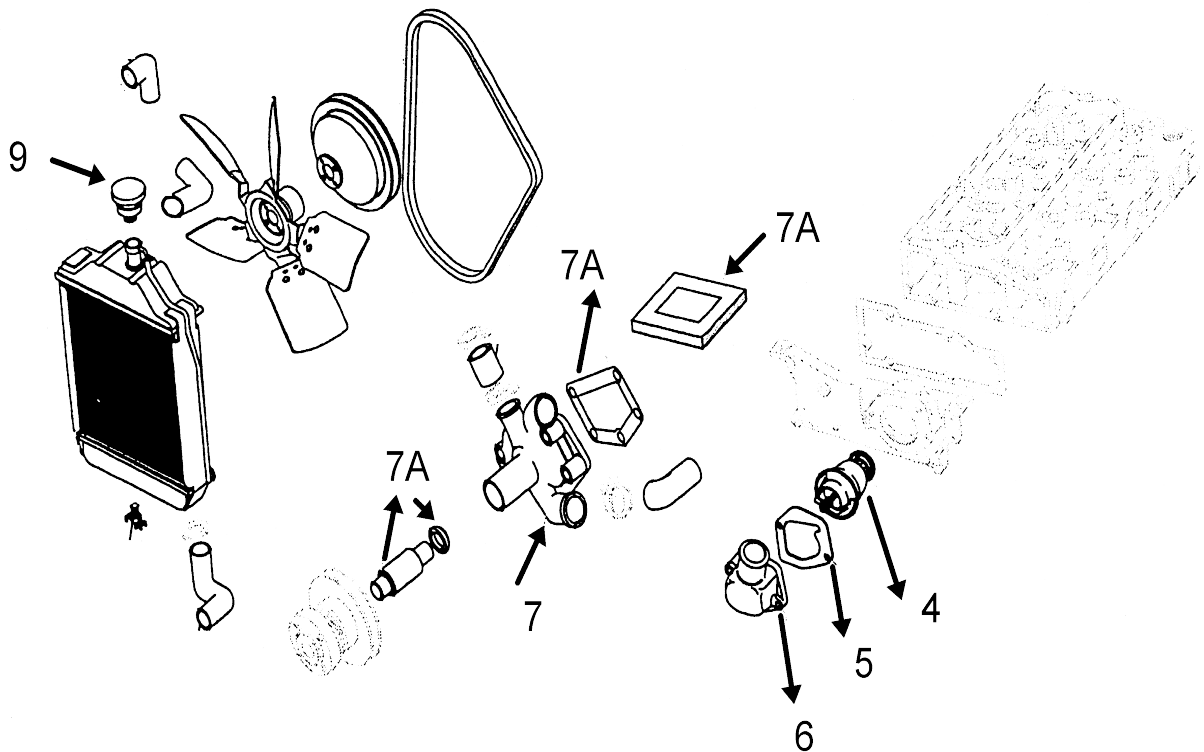
**GASKET & SEALS**

ITEM #	PART NUMBER	DESCRIPTION	4 CYL	6 CYL
3	40100301	Front Crank Seal	-	1
4	98480127	Rocker Valve Cover Gasket	-	2
8	4830381	Head Gasket	-	2

**\* Lower engine gasket and seal kits do not include rear main seal.  
Consult proper equipment parts manual or call MinnPar Inc.  
for correct seal.**



## COOLING SYSTEM





OEM and Quality Replacement Parts -- Since 1982

**GROUP "A" MODELS 8041.I.02, 8045.04, 8065.04**

**COOLING SYSTEM**

ITEM #	PART NUMBER	DESCRIPTION	4 CYL	6 CYL
4	4823211	Thermostat	1	1
5	4661543	Housing	1	1
6	98420754	Gasket	1	1
7	93191101	Water Pump	1	1
7 A	76029352	Water Pump, Repair Kit	1	1
9	76027863	Radiator Cap*	1	1
*Some construction equipment applications.				

**GROUP "B" MODELS 8041.I.05, 8061.I.05, 8065.05**

**COOLING SYSTEM**

7	4813370	Water Pump	1	1
7 A	1940105	Water Pump, Repair Kit	1	1
7	93191101	Water Pump	1	1
7 A	76029352	Water Pump, Repair Kit	1	1
9	76027863	Radiator Cap*	1	1
*Some construction equipment applications.				

## GROUP "C" MODELS 8045.24, 8065.24

### COOLING SYSTEM

ITEM #	PART NUMBER	DESCRIPTION	4 CYL	6 CYL
4	4823211	Thermostat	1	1
5	4661543	Housing	1	1
6	98420754	Gasket	1	1
7	93191101	Water Pump	1	1
7 A	76029352	Water Pump, Repair Kit	1	1
9	76027863	Radiator Cap*	1	1
<i>*Some construction equipment applications.</i>				

## GROUP "D" MODELS 8041.I.05, 8061.I.05, 8065.05

### COOLING SYSTEM

7	4813370	Water Pump	1	1
7 A	1940105	Water Pump, Repair Kit	1	1

## GROUP "E" MODELS 8365.25

### COOLING SYSTEM

4	4808727	Thermostat	1	1
6	98443664	Gasket	1	1
7	98410023	Water Pump	1	1
7 A	79094075	Water Pump, Repair Kit	1	1
9	76027863	Radiator Cap*	1	1
<i>*Some construction equipment applications.</i>				



*OEM and Quality Replacement Parts -- Since 1982*

## **FILTER SECTION**

**MODELS FD5, FL5 - UP to S/N 201359**

ITEM #	PART NUMBER	DESCRIPTION
1	4648371	Engine Oil Filter
1	4788503	Fuel Filter
1	772160	Sediment Bowl Screen
1	79081328	Air, Outer
1	79081327	Air, Inner
1	79104646	Transmission
1	1930874	Hydraulic

**MODELS FD5, FL5 - from S/N 201359**  
**also FL5B ALL S/N's**

1	4648371	Engine Oil Filter
2	251397	Fuel Filter
1	1930764	Air, Outer
1	1930730	Air, Inner
1	79104646	Transmission
1	1930874	Hydraulic

**MODELS FD7, FL7 - UP to S/N 250904**

2	4027979	Engine Oil Filter
1	4788503	Fuel Filter
1	6800064	Air, Outer
1	1007974	Air, Inner



OEM and Quality Replacement Parts -- Since 1982

**MODELS FD7,FL7 from S/N 250905**  
**FL7B all S/N's**

ITEM #	PART NUMBER	DESCRIPTION
2	4027979	Engine Oil Filter
2	1930010	Fuel Filter
1	6800064	Air, Outer
1	1007974	Air, Inner
<b><u>MODELS 8B,FL9 - ALL S/N's</u></b>		
1	4648371	Engine Oil Filter
1	1909119	Primary Fuel Filter
1	251397	Secondary Fuel Filter
1	6800064	Air, Outer
1	1007974	Air, Inner
<b><u>MODELS FD9 - ALL S/N's</u></b>		
2	1930213	Engine Oil Filter
1	4788503	Fuel Filter
1	6800064	Air, Outer
1	1007974	Air, Inner

## MODELS 10B - ALL S/N's

ITEM #	PART NUMBER	DESCRIPTION
2	4648371	Engine Oil Filter
1	4788503	Primary Fuel Filter
1	1902096	Secondary Fuel Filter
1	8322128	Air, Outer
1	8322129	Air, Inner
1	1930736	Hydraulic

## MODELS FL10B - ALL S/N's

1	4648371	Engine Oil Filter
1	4788503	Fuel Filter
1	772160	Sediment Bowl Screen
1	8322128	Air, Outer
1	8322129	Air, Inner
1	1930736	Hydraulic

## MODELS 10C,FL10C - ALL S/N's

1	4667755	Engine Oil Filter
1	4788503	Primary Fuel Filter
1	1902096	Secondary Fuel Filter(10C only)
1	772160	Sediment Bowl Screen(FL10C only)
1	9043778	Air, Outer
1	79043779	Air, Inner
1	1930736	Hydraulic



OEM and Quality Replacement Parts -- Since 1982

**MODELS FL10E - ALL S/N's**

ITEM #	PART NUMBER	DESCRIPTION
2 1 1 1 1	1930213 4788503 70684732 70662608 1930743	Engine Oil Filter Fuel Filter Air, Outer Air, Inner Transmission
<b><u>MODELS 14B, FL14B - ALL S/N's</u></b>		
2 1 1 1 1 1 1	4667755 4788503 1902096 8322128 8322129 1930736	Engine Oil Filter Primary Fuel Filter Secondary Fuel Filter Air, Outer Air, Inner Hydraulic
<b><u>MODELS 14C, FL14C, FL14E, FD14E - ALL S/N's</u></b>		
2 1 1 1 1 1 1 1 1 1	4667755 1930542 4788503 1902096 9043778 79043779 79042202 H3074307M1 4734562 1930736	Engine Oil Filter(up to s/n 52918) Engine Oil Filter(s/n 52919 & up) Primary Fuel Filter(spin on) Secondary Fuel Filter(cartridge) Air, Outer(except C s/n's 50101-52918) Air, Inner(except C s/n's 50101-52918) Air, Outer(s/n's 50101-52918 C only) Air, Inner(s/n's 50101-52918 C only) Coolant Hydraulic(FL14E only)



## MODELS FR7 - ALL S/N's

ITEM #	PART NUMBER	DESCRIPTION
1	4648371	Engine Oil Filter
2	251397	Fuel Filter
1	9917890	Sediment Bowl Screen
1	1023677	Air, Outer
1	H3638351M1	Air, Inner
1	79104646	Hydraulic

## MODELS FR7 - S/N 63010 & UP

1	4648371	Engine Oil Filter
1	1930010	Fuel Filter
1	79081327	Air, Outer
1	79081328	Air, Inner
1	79104646	Transmission

## MODELS FR9B - ALL S/N's

1	1930213	Engine Oil Filter
1	1930010	Fuel Filter
1	6800064	Air, Outer
1	1007974	Air, Inner
1	79104646	Transmission



OEM and Quality Replacement Parts -- Since 1982

**MODELS FR10B- ALL S/N's**

ITEM #	PART NUMBER	DESCRIPTION
2	1930213	Engine Oil Filter
2	1930010	Fuel Filter
1	6800064	Air, Outer
1	1007974	Air, Inner
1	79104646	Transmission
<b><u>MODELS FR10 up to S/N 525840</u></b>		
2	4027979	Engine Oil Filter
2	251397	Fuel Filter
1	70684732	Air, Outer
1	70662608	Air, Inner
1	3142551	Transmission
1	4734562	Coolant
1	70666421	Hydraulic
<b><u>MODELS FR11 ALL S/N,FR12 S/N 525840 &amp; up,FR12B S/N 560101 &amp; up</u></b>		
2	1930213	Engine Oil Filter
1	4788503	Fuel Filter
1	70684732	Air, Outer
1	70662608	Air, Inner
1	3142551	Transmission
1	4734562	Coolant(if equipped)
1	70666421	Hydraulic

**MODELS FR15, FR15B - ALL S/N's**

ITEM #	PART NUMBER	DESCRIPTION
1	4667755	Engine Oil Filter(FR15 only)
1	1930542	Engine Oil Filter(FR15Bonly)
1	4788503	Primary Fuel Filter(spin on)
1	1902096	Secondary Fuel Filter(cartridge)
1	9043778	Air, Outer
1	79043779	Air, Inner
1	3142551	Transmission
1	4734562	Coolant
2	70666421	Hydraulic

**MODELS FR20, FR20B - ALL S/N's**

2	1930595	Engine Oil Filter
1	4788503	Primary Fuel Filter(spin on)
1	1902096	Secondary Fuel Filter(cartridge)
1	684734	Air, Outer
1	70662477	Air, Inner
1	3142551	Transmission
1	4734562	Coolant
2	70666421	Hydraulic

--	--	--

--	--	--

# ***MINNPAR***

---

*OEM and Quality Replacement Parts -- Since 1982*

## **CONTACT MINNPAR FOR YOUR ENGINE PARTS NEEDS**

**612-379-0606**

**800-889-3382**

**info@minnpar.com**

**Use Acrobat Reader to view and/or print this file.  
Acrobat Reader can be download free from the internet, or  
can be purchased from most computer/software stores.**

**5273 Program Avenue, Mounds View, Minnesota 55122 USA  
Telephone: (612) 379-0606 Fax: (612) 378-3741 Toll Free: (800) 889-3382  
www.minnpar.com email: info@minnpar.com**